



Performance DC

Loving music

User manual



Black with black chassis



Black with silver chassis



Silver with silver chassis



Silver with black chassis



Silver with wood chassis



Black with wood chassis

User manual

Dear **Clearaudio** customer,

You have purchased a State-Of-The-Art turntable, the *Performance DC*, a world class product of **Clearaudio** electronic GmbH. Congratulations on your purchase!

The main chassis consists of a complex sandwich of materials: aluminium and HDF material. The powerful and smooth-running DC motor is integrated within and is effectively decoupled by the main chassis.

The motor is hidden beneath the platter and drives the precision machined aluminium sub-platter via a precision machined POM main platter are supported by **Clearaudio's** patented *CMB Ceramic Magnetic Bearing*.

The drive system is operated by four blue illuminated buttons, ergonomically integrated into the front left of the chassis. Almost any commercially available 9 inch tonearm can be fitted by virtue of the easily interchangeable armboards.

Please read this user manual carefully so that you can enjoy all the advantages of your *Performance DC* turntable. All information given will help to generate the best performance and avoid any possible damages.

We hope you will enjoy your new **Clearaudio Performance DC** turntable.

Clearaudio electronic GmbH

Please read the warnings before connecting your Performance DC turntable to the mains supply.

WARNINGS

Don't expose your turntable to rain or humidity.

Don't handle the mains leads with wet hands.

Don't place or insert anything into the equipment or through ventilation holes.

No naked flame sources, such as lighted candles, should be placed on the equipment.

CE-MARKING



The **Clearaudio Performance DC** meets the regulations concerning electromagnetic disturbance (EMC) and low-voltage appliances.



Contents

1. Packaging overview	4
2. Setup and operation	5
3. Special notes	12
4. Technical data	13
Warranty information.....	14

1. Packaging overview

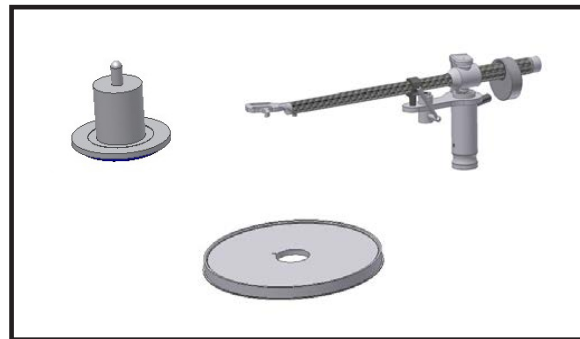
The **Clearaudio Performance DC** turntable is delivered in specially designed custom packaging.

Please check the contents according to the following list before you set up your new **Clearaudio Performance DC** turntable.

1. Layer (top):

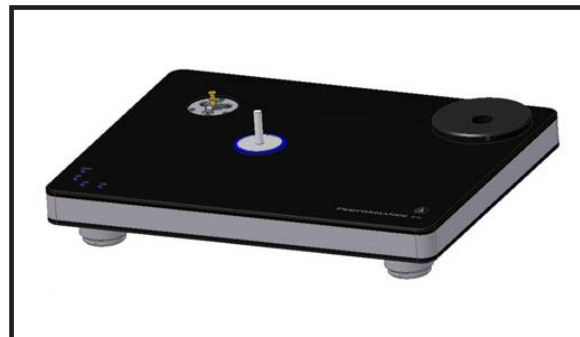
Top of bearing, belt, fittings and accessories (Quality and warranty card, bearing oil, hex keys, grounding wire) sub-platter, power supply

**If ordered as set:
Tonearm and/ or pickup**



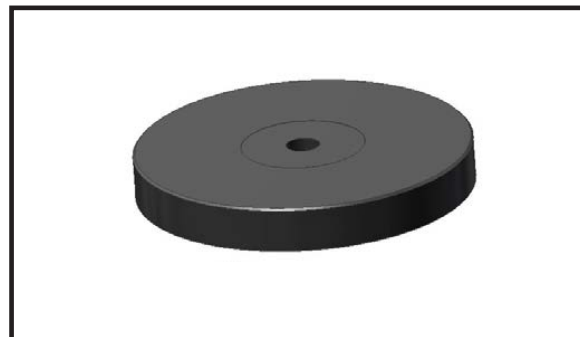
2. Layer (middle):

Turntable chassis



3. Layer (bottom):

Platter



Pic. 1: Packaging overview

IMPORTANT NOTICE: Please double check the tightness of all bolts and armboard mounting hardware, as temperature fluctuations during transit may have caused the hardware to become loose.



Loving music

User manual

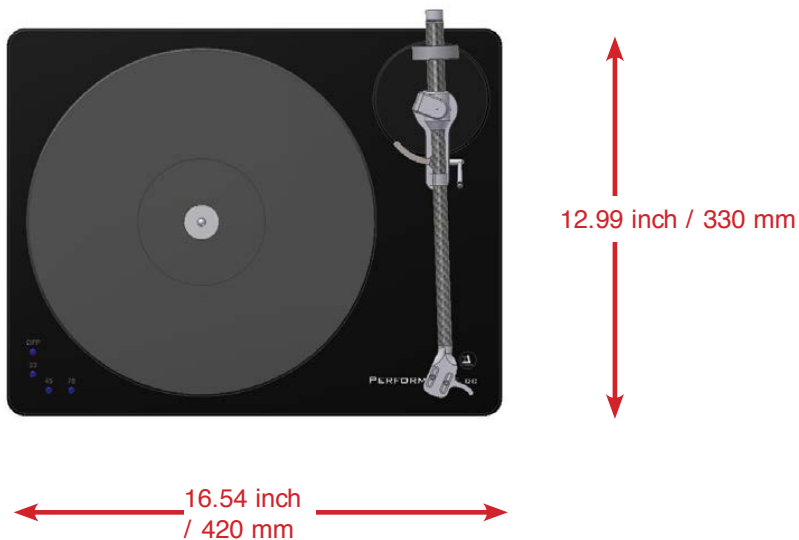
2. Setup and operation

The *Performance DC* turntable consists of several components, as described in No 1 (Packaging overview).

The setup is easy, as some of the components are pre-assembled at the factory. Please make use of the white gloves enclosed in order to avoid scratches or unwanted fingerprints (e.g. on the platter).

Please follow the instructions step by step:

The *Performance DC* requires a space of at least 16.54 x 12.99 inches for positioning.



Pic. 2: Setting up space

2.1

Place the pre-mounted chassis on your hifi-rack or another suitable surface.



Pic. 3: *Performance DC*chassis

2.2

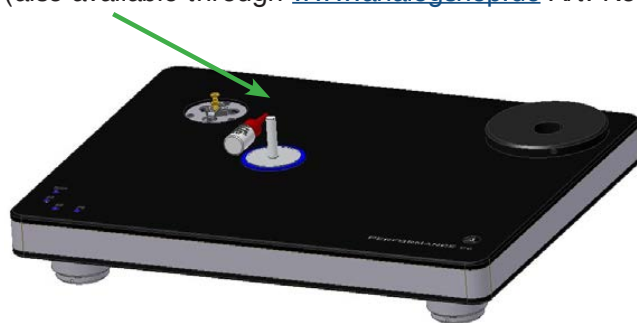
To avoid hum noises we recommend to ground the bearing. For that attach the supplied grounding wire to the the existing screw on the bottom side of the chassis (# 2.5).



Pic. 4: Grounding the bearing of the *Performance DC*

2.3

Please remove the protective seal from the bearing shaft and place two drops of the synthetic bearing oil on the ceramic bearing shaft. Slip the bearing top onto the bearing shaft of the turntable (also available through www.analogshop.de Art. No. AC068).



Pic. 5: Bearing oil

2.4

Now you can set the bearing upper part carefully onto the bearing. To avoid damages make sure you slide the bearing upper part slowly and carefully on the polished ceramic shaft.

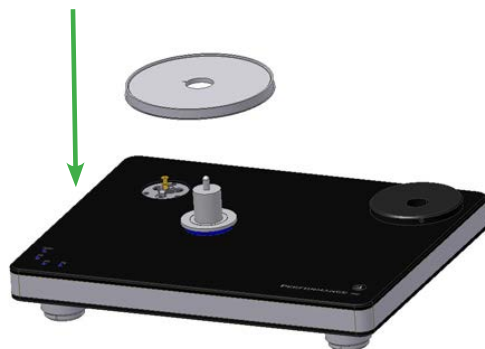


Pic. 6: Fitting the bearing upper part

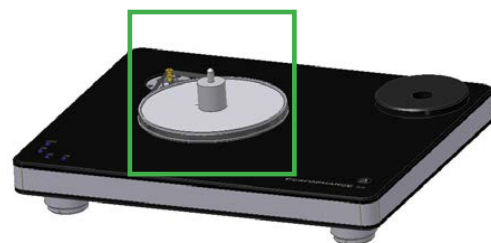
2.5

Now you can set the sub-platter carefully onto the bearing (see Pic. 7). To avoid any damage, make sure you slide the sub-platter slowly and carefully onto the bearing.

After that, take the included belt and place it around the motor and the sub-platter (see Pic. 7.1). At this point the sub-platter will be higher than the pulley. This is normal, as the CMB requires the weight of the platter to fully engage it.



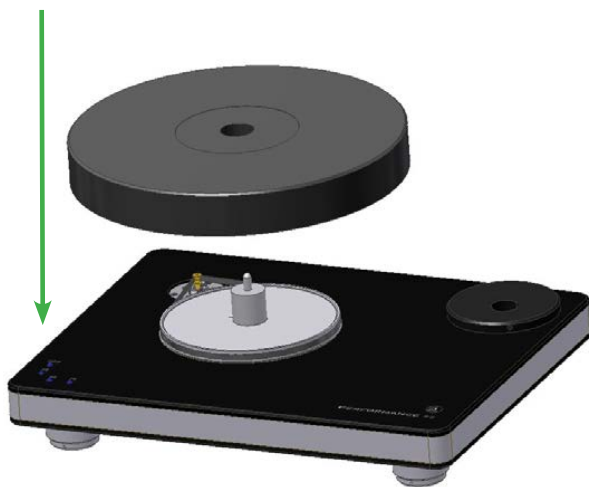
Pic. 7: Setting the sub-platter



Pic. 7.1: Placing the belt

2.6

Now you can set the platter carefully onto the bearing. To avoid damage, make sure you slide the platter slowly and cautiously on the sub-platter/ bearing assembly. Hold the platter securely, so the platter does not slip or fall on your turntable.



Pic. 8: Setting the platter onto the bearing

2.7

Please check with the bubble level gauge, if your *Performance DC* turntable is in a level position.

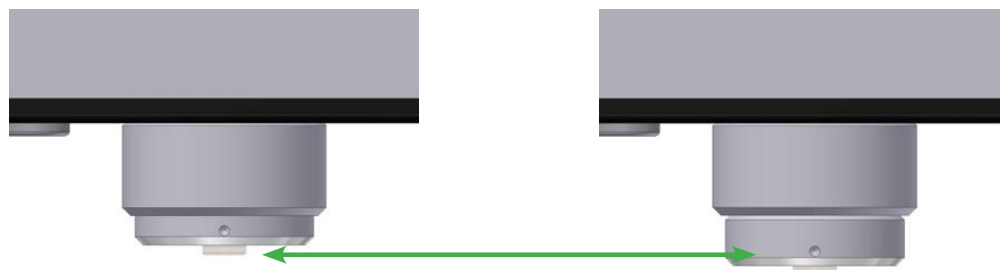
You can adjust each of the turntable's feet to get the turntable level. Only if the turntable is in a level position you will get the best results with your turntable.

Please note:

Through turning the feet clockwise you will raise the turntable, by turning counter clockwise the turntable will lower.



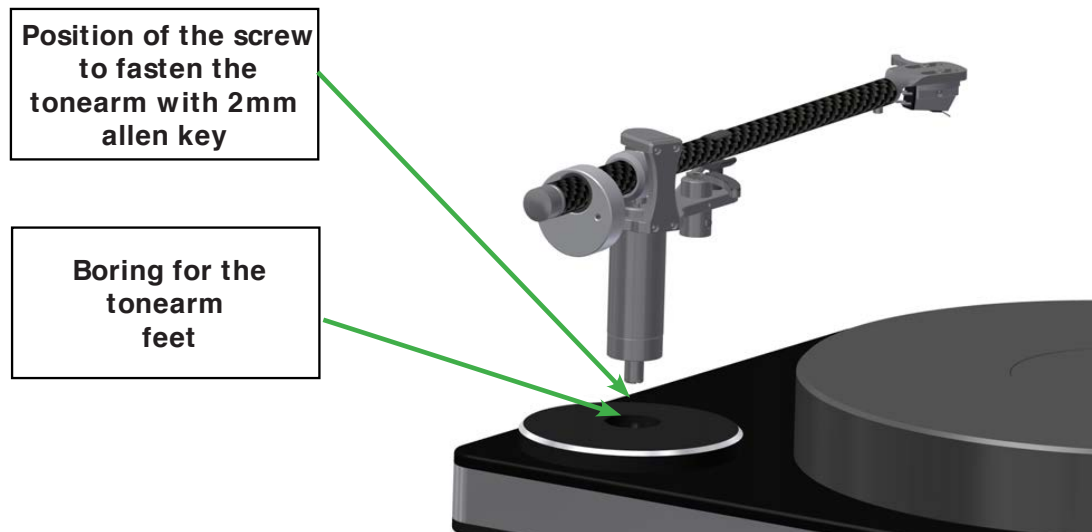
Pic. 9: Adjustment of the level position



Pic. 9.1: Adjustment of the height

2.8

If the *Performance DC* turntable was purchased as a package together with the *Clarify* tonearm, please follow the below described installation of the tonearm.



Pic. 10: Rear view *Clarify* tonearm

1. Insert carefully first the cable and then the tonearm feet through the hole of the tonearm base.
2. Now adjust the tonearm height.
3. At the end secure the tonearm with the screws with are already integrated at the front of the mounting base.
4. For tonearm and cartridge mounting please refer to the user manual of the respective manufacturer.

If you purchased the **Clearaudio Performance DC** as package with tonearm and cartridge, you received also a Smart Stylus Gauge as accessories, which allows you to adjust the tracking force of the cartridge.

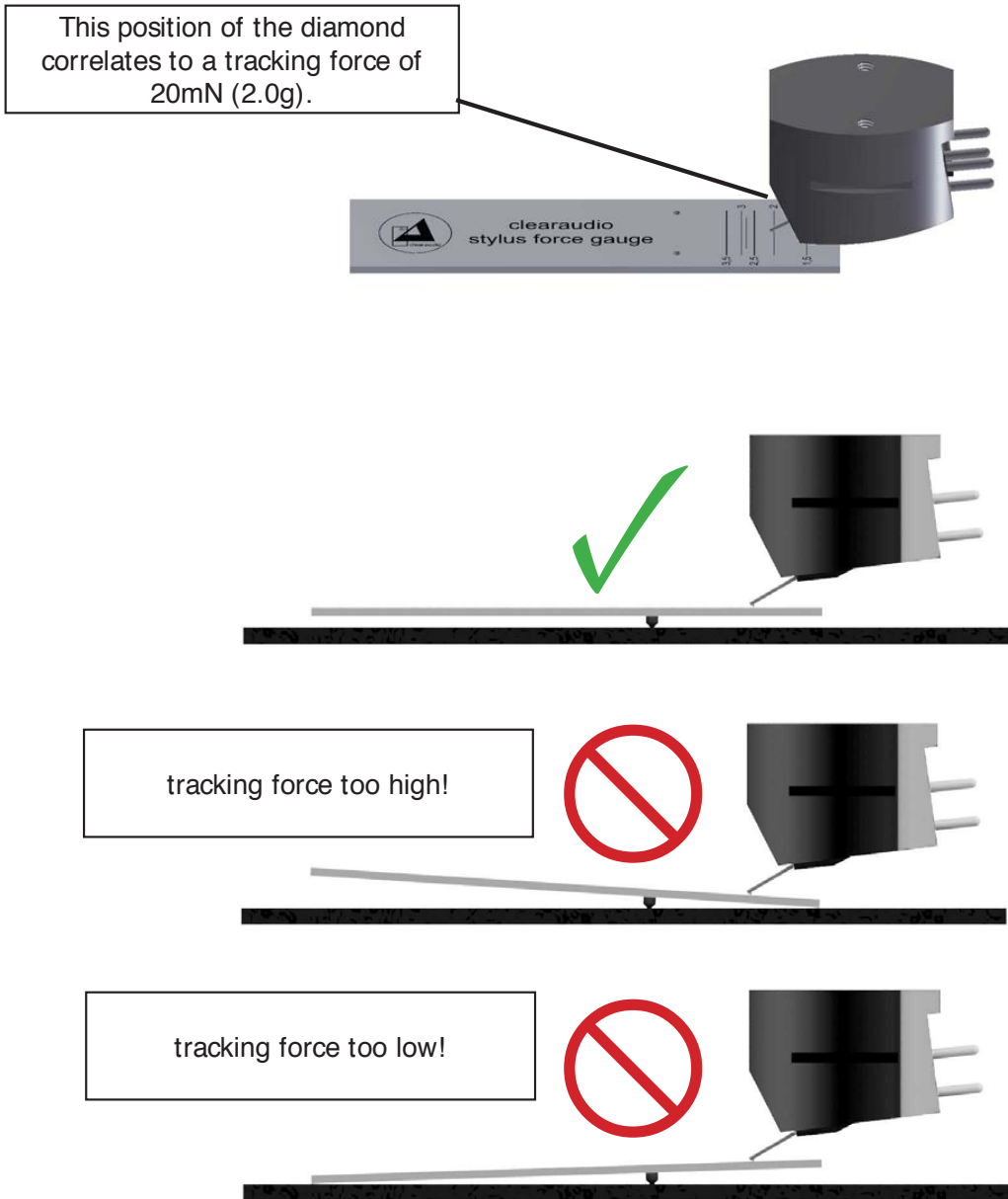


Fig. 11: Use of the Smart Stylus Gauge

Now you can connect the *Performance DC* turntable with the main supply.



Pic. 12: Connection to the main supply

2.9 Speed fine adjustment

As the motor adjustment is already pre-set at the factory, you don't have to check the speed before using the turntable for the first time.

If you want to check the speed of your turntable by yourself over the time, we recommend to use a Stroboscope Testrecord. To adjust the speed so perfectly and precisely as possible, we recommend the **Clearaudio** Stroboscope Testrecord (Art. No. AC038) and the **Clearaudio** "Speed Light" (Art. No. AC039, both available at www.analogshop.de).

On the backside (close to the power supply input) of your turntable there are three setting trimmers:



- Left trimmer = setting 78rpm
(near power supply jack)
- Middle trimmer = setting 45rpm
- Right trimmer = setting 33 1/3rpm

Pic. 13: Speed fine adjustment

Urgent:

Don't use a metal screw driver. Only use screw driver made out of synthetic or ceramic material, to avoid circuit damage.

Now you are finally ready to play your vinyl records!

Attention:

If the turntable is not in use, disconnect the unit completely from the power supply by removing the main plug from the socket.

We wish you a lot of pleasure with your new *Performance DC* turntable.

3. Special notes

3.1 Maintenance

- If the *Performance DC* turntable is a longer time not in use, please disconnect the motor from the main supply.
- Every two years you can lubricate the bearing of the turntable platter with the delivered oil. In this case it is enough to put 1 or 2 drops of the oil into bearing.
- Please take special caution to any damages of the power cord. Any damages should be repaired only by authorized personal. A damaged power cord must be exchanged immediately!

Caution!

Please use only non alcoholic fluids and only fluids specially used for acrylic, to clean the *Performance DC* turntable.

Otherwise damage on the material or the surface can occur!

Don't use try cloths for cleaning because of the electrostatic charging. Suitable cleaning fluids will be available at Clearaudio (www.analogshop.de) or your Hifi dealer.

3.2 Transportation

Send / ship the *Performance DC* turntable always and only in the original packing!!!

Only in the original packing **Clearaudio** can provide the warranty.

If you repackage the turntable, please make all steps inverted like at installation and setup (chapter 2).

- If any transportation of the *Performance DC* turntable should be necessary, please always remove the turntable platter and the shaft holder. Otherwise serious damage can occur!
- To avoid any dust coming into the bearing, the bearing hole needs to be covered as well.

3.3 Service

- In case of any necessary, service for all **Clearaudio** products should be done by authorized personal only.
- In case of any repair, the **Clearaudio Performance DC** turntable needs to be send to your nearest authorized **Clearaudio** distributor, dealer or directly to the **Clearaudio** factory.

Clearaudio electronic GmbH

Spardorfer Str. 150

91054 Erlangen

Germany

Phone.: +49 9131 40300 100

Fax: +49 9131 40300 119

www.clearaudio.de

www.analogshop.de

info@clearaudio.de



4. Technical Data

Construction details:	Resonance-optimised turntable, highly compressed wood chassis in sandwich construction embedded between two aluminium plates
Speed change:	Comfortable speed change, 33 1/3rpm, 45rpm, 78rpm (optional)
Drive unit:	Decoupled and resonance damped DC motor, flat belt-drive and plug-in power supply unit designed for worldwide use with all networks and power frequencies.
Bearing:	Cut and polished ceramic shaft in a sintered bronze bushing, Clearaudio ceramic magnetic bearing (CMB)
Platter:	Synthetic material, surface CNC-precision milled, surface CNC-precision milled, 1.1 inches / 40mm thickness
Speed accuracy (measured):	0,05%
Power consumption:	Max. consumption: 3.3 watts Consumption in operation: 1.6 watts Off mode: 0.0 watts
Total weight:	approx. 11kg
Dimensions (W/ D/ H in inches):	approx. 16.54 x 12.99 x 4.92 (without tonearm)
Dimensions (W/ D/ H in mm):	approx. 420 x 330 x 125 (without tonearm)
Warranty:	5 years*

* Provided that the warranty card is correctly completed and returned to **Clearaudio**, or your product is registered online at <https://clearaudio.de/en/service/registration.php>, within 14 days of purchase.

Clearaudio electronic is not responsible for typographical errors in descriptions.
 Technical specifications subject to change or improvement without prior notice.
 Product availability is as long as stock lasts.
 Copies and reprints of this documents, including extracts, require written consent from
Clearaudio electronic GmbH; Germany

The full, extended warranty period for the *Performance DC* turntable is 5 years. To receive this full **Clearaudio** warranty, you must either complete and return the relevant section of the warranty registration card to **Clearaudio**, or register your product online at <https://clearaudio.de/en/service/registration.php>, within 14 days of purchase. Otherwise only the legal warranty of 2 years can be considered. The full 5 year warranty can only be honoured if the product is returned in its original packing.



ENGLISH WARRANTY

For warranty information, contact your local **Clearaudio** distributor.

RETAIN YOUR PURCHASE RECEIPT

Your purchase receipt is your permanent record of a valuable purchase. It should be kept in a safe place to be referred to as necessary for insurance purposes or when corresponding with **Clearaudio**.

IMPORTANT

When seeking warranty service, it is the responsibility of the consumer to establish proof and date of purchase.

Your purchase receipt or invoice is adequate for such proof.

FOR U.K. ONLY

This undertaking is in addition to a consumer's statutory rights and does not affect those rights in any way.



FRANÇAIS GARANTIE

Pour des informations sur la garantie, contacter le distributeur local **Clearaudio**.

CONSERVER L'ATTESTATION D'ACHAT

L'attestation d'achat est la preuve permanente d'un achat de valeur. La conserver en lieu sûr pour s'y reporter aux fins d'obtention d'une couverture d'assurance ou dans le cadre de correspondances avec **Clearaudio**.

IMPORTANT

Pour l'obtention d'un service couvert par la garantie, il incombe au client d'établir la preuve de l'achat et d'en corroborer la date. Le reçu ou la facture constituent des preuves suffisantes.



DEUTSCH GARANTIE

Bei Garantiefragen wenden Sie sich bitte zunächst an Ihren **Clearaudio** Händler. Heben Sie Ihren Kaufbeleg gut auf.
WICHTIG!

Die Angaben auf Ihrer Quittung erlauben uns die Identifizierung Ihres Gerätes und belegen mit dem Kaufdatum die Dauer Ihrer Garantie-Ansprüche. Für Serviceleistungen benötigen wir stets die Gerätenummer. Diese finden Sie auf dem Typenschild auf der Rückseite des Gerätes oder auch in der beigefügten Garantie-Registrierkarte.



NEDERLANDS GARANTIE

Voor inlichtingen omtrent garantie dient u zich tot uw plaatselijke **Clearaudio**.

UW KWITANTIE, KASSABON E.D. BEWAREN

Uw kwitantie, kassabon e.d. vormen uw bewijs van aankoop van een waardevol artikel en dienen op een veilige plaats bewaard te worden voor evt. verwijzing bijv. in verbend met verzekering of bij correspondentie met **Clearaudio**.

BELANGRIJK

Bij een evt. beroep op de garantie is het de verantwoordelijkheid van de consument een gedateerd bewijs van aankoop te tonen. Uw kassabon of factuur zijn voldoende bewijs.

**ITALIANO****GARANZIA**

L'apparecchio è coperto da una garanzia di buon funzionamento della durata di un anno, o del periodo previsto dalla legge, a partire dalla data di acquisto comprovata da un documento attestante il nominativo del Rivenditore e la data di vendita. La garanzia sarà prestata con la sostituzione o la riparazione gratuita delle parti difettose. Non sono coperti da garanzia difetti derivanti da uso improprio, errata installazione, manutenzione effettuata da personale non autorizzato o, comunque, da circostanze che non possano riferirsi a difetti di funzionamento dell'apparecchio. Sono inoltre esclusi dalla garanzia gli interventi inerenti l'installazione e l'allacciamento agli impianti di alimentazione.

Gli apparecchi verranno riparati presso i nostri Centri di Assistenza Autorizzati. Le spese ed i rischi di trasporto sono a carico del cliente. La casa costruttrice declina ogni responsabilità per danni diretti o indiretti provocati dalla inosservanza delle prescrizioni di installazione, uso e manutenzione dettagliate nel presente manuale o per guasti dovuti ad uso continuato a fini professionali.

**ESPAÑOL****GARANTIA**

Para obtener información acerca de la garantía póngase en contacto con su distribuidor **Clearaudio**.

GUARDE SU RECIBO DE COMPRA

Su recibo de compra es su prueba permanente de haber adquirido un aparato de valor. Este recibo deberá guardarlo en un lugar seguro y utilizarlo como referencia cuando tenga que hacer uso del seguro o se ponga en contacto con **Clearaudio**.

IMPORTANTE

Cuando solicite el servicio otorgado por la garantía el usuario tiene la responsabilidad de demostrar cuándo efectuó la compra. En este caso, su recibo de compra será la prueba apropiada.



Loving music

clearaudio electronic GmbH

Spardorfer Straße 150
91054 Erlangen
Germany

Phone/Tel.: +49 9131 40300 100
Fax: +49 9131 40300 119
www.clearaudio.de
www.analogshop.de
info@clearaudio.de

Handmade in Germany

(Technische Änderungen vorbehalten -
Technical specification are subject to change without prior notification)
2019